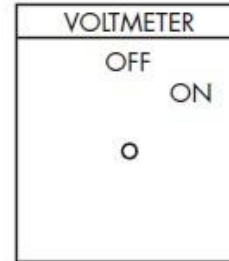
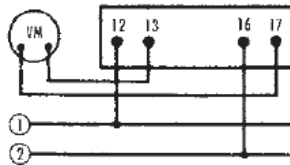


VOLTMETER TRANSFER SWITCHES

2-WIRE, SINGLE-PHASE OR DC - 3101C

Handle: Round Knurled
 Jumpers supplied as shown
 Engraving Code: 031D-2V14

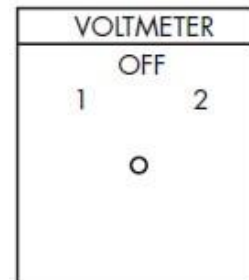
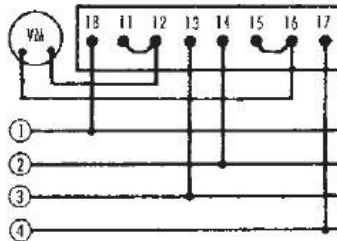
DECK	CONTACTS	POS.	
		OFF	ON
1	12 ○— — —○13	✓	✓
	16 ○— — —○17	✓	✓



4-WIRE, 2-PHASE OR 2 SEPARATE DC CIRCUITS - 3102C

Handle: Round Knurled
 Jumpers supplied as shown
 Engraving Code: 031C-3V14

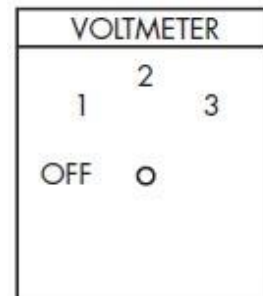
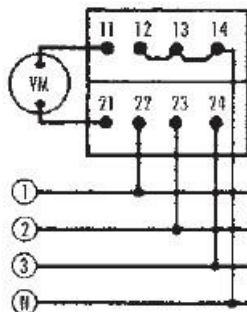
DECK	CONTACTS	POS.	
		1 OFF	2
1	11 ○— — —○18	✓	✓
	12 ○— — —○13	✓	✓
	15 ○— — —○14	✓	✓
	16 ○— — —○17	✓	✓



3-PHASE, PHASE TO NEUTRAL - 3103C

Handle: Round Knurled
 Jumpers supplied as shown
 Engraving Code: 031C-4V15A

DECKS	CONTACTS	POSITIONS		
		OFF	1	2
1	11 ○— — — —○12	✓	✓	✓
	11 ○— — — —○13	✓	✓	✓
	11 ○— — — —○14	✓	✓	✓
2	21 ○— — — —○22	✓	✓	✓
	21 ○— — — —○23	✓	✓	✓
	21 ○— — — —○24	✓	✓	✓



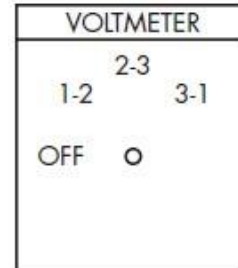
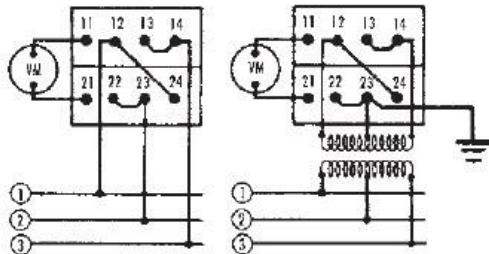
3-PHASE, PHASE-TO-PHASE - 3104C

Handle: Round Knurled

Jumpers supplied as shown

Engraving Code: 031C-4V21

DECKS	CONTACTS	POSITIONS		
		OFF	1-2	3-1
1	11		X	
	12			X
	13			X
	14			X
2	21		X	
	22			X
	23			X
	24			X



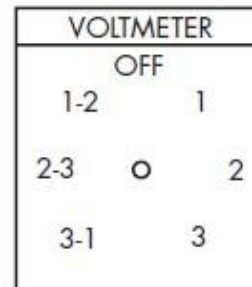
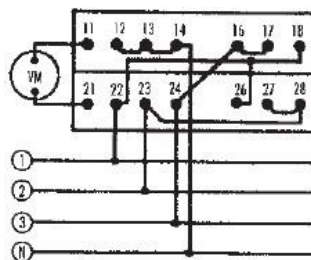
3-PHASE, PHASE-TO-PHASE AND PHASE-TO-NEUTRAL - 3105C

Handle: Round Knurled

Jumpers supplied as shown

Engraving Code: 031E-7V24

DECKS	CONTACTS	POSITIONS						
		3-1	2-3	1-2	OFF	1	2	3
1	11							
	12					X		
	13						X	
	14							X
	16	X						
	17		X					
2	21							
	22						X	
	23							X
	24							X
	26	X						
	27		X					



6-WIRE, 2 THREE-PHASE CIRCUITS, PHASE-TO-PHASE - 3106C

Handle: Round Knurled

Jumpers supplied as shown

Engraving Code: 031E-8V33

DECKS	CONTACTS	POSITIONS					
		OFF	1-2	3-1	OFF	1-2	3-1
1	11						
	12		X				
	13			X			
	14				X		
	16	X					
	17		X				
2	21						
	22					X	
	23						X
	24						X
	26	X					
	27		X				

