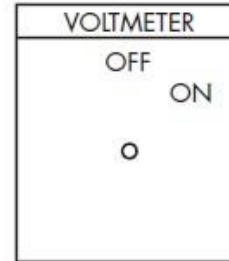
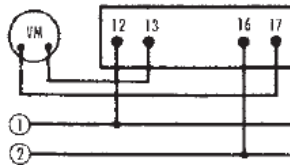


VOLTMETER TRANSFER SWITCHES

2-WIRE, SINGLE-PHASE OR DC - 2401C

Handle: Round Knurled
 Jumpers supplied as shown
 Engraving Code: 010D-2V14

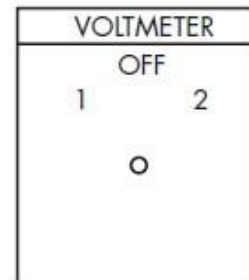
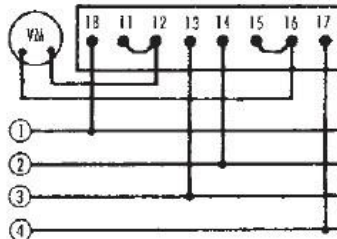
DECK	CONTACTS	POS.	
		OFF	ON
1	12 o— — —o13	X	X
	16 o— — —o17	X	X



4-WIRE, 2-PHASE OR 2 SEPARATE DC CIRCUITS - 2402C

Handle: Round Knurled
 Jumpers supplied as shown
 Engraving Code: 010C-3V14

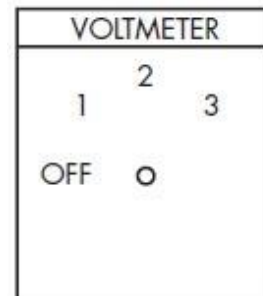
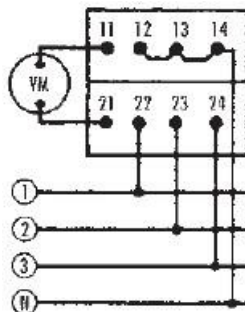
DECK	CONTACTS	POS.	
		1 OFF	2
1	11 o— — —o18	X	X
	12 o— — —o13	X	X
	15 o— — —o14	X	X
	16 o— — —o17	X	X



3-PHASE, PHASE TO NEUTRAL - 2403C

Handle: Round Knurled
 Jumpers supplied as shown
 Engraving Code: 010C-4V15A

DECKS	CONTACTS	POSITIONS		
		OFF	1	2
1	11 o— — —o12	X	X	X
	11 o— — —o13	X	X	X
	11 o— — —o14	X	X	X
2	21 o— — —o22	X	X	X
	21 o— — —o23	X	X	X
	21 o— — —o24	X	X	X

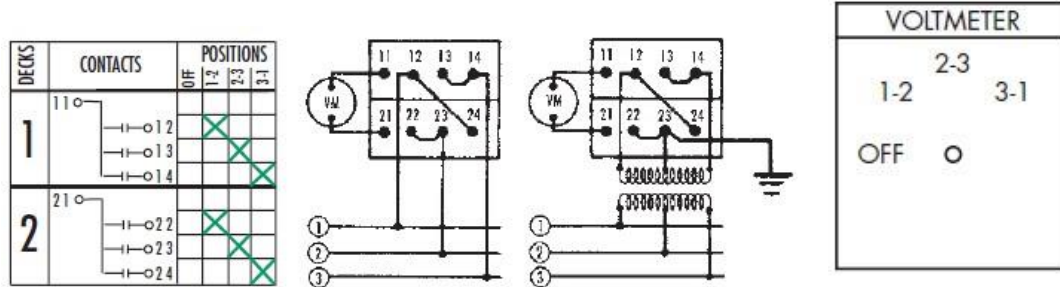


3-PHASE, PHASE-TO-PHASE - 2404C

Handle: Round Knurled

Jumpers supplied as shown

Engraving Code: 010C-4V21

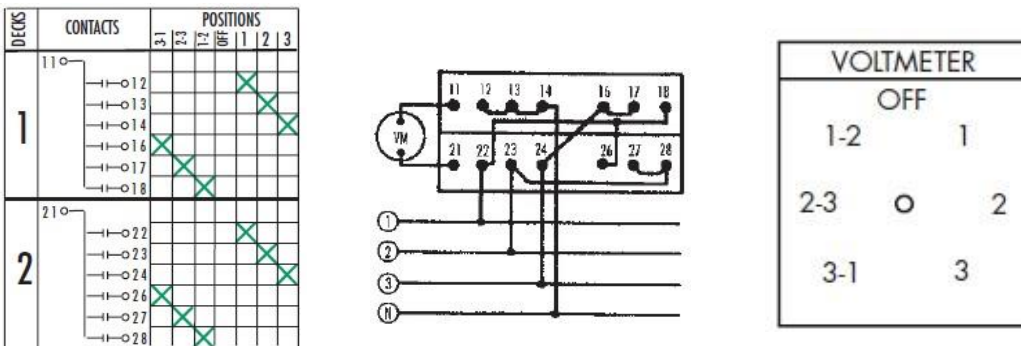


3-PHASE, PHASE-TO-PHASE AND PHASE-TO-NEUTRAL - 2405C

Handle: Round Knurled

Jumpers supplied as shown

Engraving Code: 010E-7V24



6-WIRE, 2 THREE-PHASE CIRCUITS, PHASE-TO-PHASE - 2406C

Handle: Round Knurled

Jumpers supplied as shown

Engraving Code: 010E-8V33

