



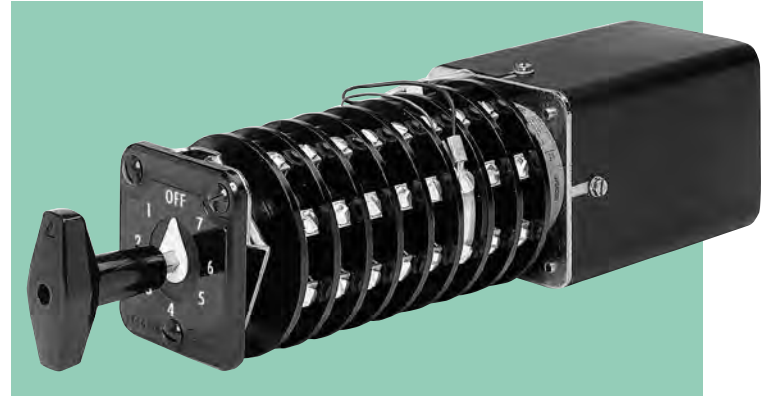
# SELECTOR SWITCH RELAYS

The Series 24 Selector Switch Relay (SSR) is an auxiliary relay that combines electrical and manual operation in a single unit for multiposition applications. Basically a unidirectional (CCW) stepping switch, the SSR can be used in any 2 to 8 position application. The SSR is ideally suited for tapswitch applications or any other multiposition application where simple or complicated contacting is used.

**Note:** The Series 24 SSR utility products comply with the following: ANSI/IEEE C37.90 and ANSI/IEEE C37.90.01

## The Series 24 Selector Switch Relay

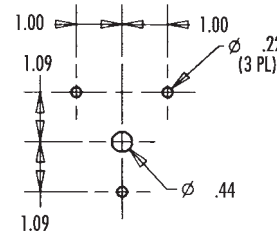
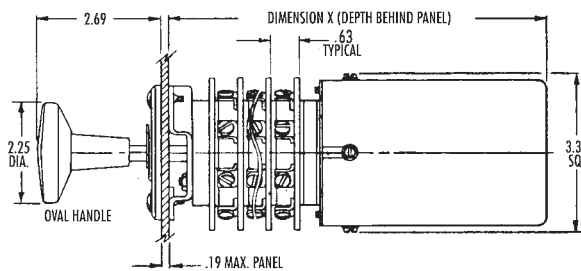
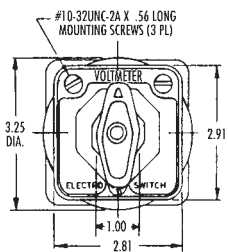
- HIGH QUALITY**
- Designed and manufactured to the highest standards in the industry
- VERSATILITY**
- Qualified to UL, CSA
  - 2 to 8 unidirectional multiposition
  - Up to 10 decks and 20 poles
  - Available for electric or manual operation
  - 3 switch circuits - One to match your application needs
- SERVICE**
- The Electroswitch team of Customer Service and Applications Professionals stand behind every Electroswitch product. Let us put over 50 years of know-how to work for you!



## SERIES 24 SSR RELAYS ORDERING INFORMATION

(Consult Factory)

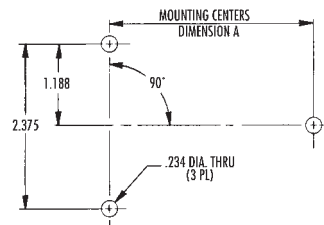
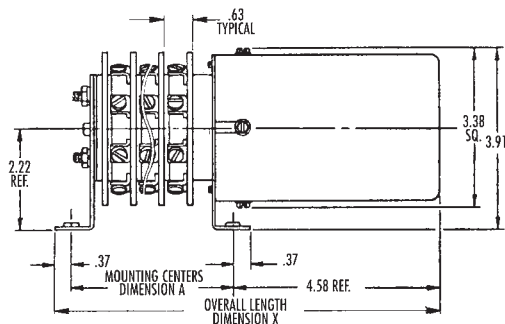
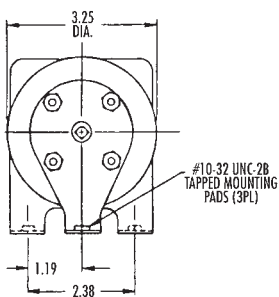
### Panel Mount



#### DEPTH BEHIND PANEL

NO. OF DECKS	DIM. X
3	8.97
5	10.22
8	12.09
10	13.34

### Shelf Mount



#### DIMENSIONS

NO. OF DECKS	DIM. A	DIM. X
3	4.134	9.08
5	5.384	10.33
8	7.259	12.21
10	8.509	13.46